

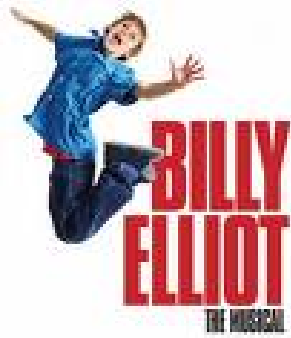


**MARCH 2009**  
UNIVERSITY COMMONS' EVENTS CALENDAR

SUNDAY	MONDAY	TUESDAY	WEDNESDAY	THURSDAY	FRIDAY	SATURDAY
1	2 6:30pm: WCC DINNER  8:00pm: RESIDENT'S MEETING <i>WITH GUEST SPEAKER FROM ASSOCIATION'S INSURANCE COMPANY</i>	3 10:30am: Tai Chi Class	4  6:30pm: WCC DINNER	5  1:00pm: Int'l Neighbors Needlework Grp	6 10:30am: Tai Chi Practice  Common Time 4:30-6:30	7 (2:00am) Turn your clocks forward one hour before you go to sleep 
8 Daylight Savings Time Begins	9 1:00pm: Art Committee Meeting 5 O'Clock Talk: Hattula Moholy- Nagy  6:30pm: WCC DINNER	10 10:30am: Tai Chi Class	11 5 O'Clock Talk: Bette Michael  6:30pm: WCC DINNER	12 1:00pm: Int'l Neighbors Needlework Grp 1:00pm: Ikebana International 2:00pm: Program Committee Mtg	13  Common Time 4:30-6:30	14
15	16 3:00pm: Health & Fitness Committee Meeting  4:30pm: DUO CONCERT Timothy Steeves / Nancy Dahn -- Violin and Piano  6:30pm: WCC DINNER	17 10:30am: Tai Chi Class  Happy St. Patrick's Day Wear Green 	18  6:30pm: WCC DINNER 8:00pm: Baker's Dozen Book Club	19  1:00pm: Int'l Neighbors Needlework Grp  3:00pm: Board of Directors' Meeting	20 First day of spring   10:30am: Tai Chi Practice  Common Time 4:30-6:30	21
22	23  6:30pm: WCC DINNER	24 10:30am: Tai Chi Class  8:00pm: Drew Bollinger Voice and Piano Recital	25  6:30pm: WCC DINNER 8:00pm: Library Committee Mtg.	26  1:00pm: Int'l Neighbors Needlework Grp	27 10:30am: Tai Chi Practice  Common Time 4:30-6:30  7:00pm: Matt Gozzard Jazz Saxophone Combo Recital	28
29  4:00pm: CINEMA AT THE COMMONS "Billy Elliott"	30 6:30pm: WCC DINNER  8:00pm: Shakespeare Reading Group	31 10:30am: Tai Chi Class				

# Monthly Events



Cinema at the  
Commons

"Billy Elliott"

March 29th

## DINING PROGRAM

**Mondays and Wednesdays, 6:30pm**

The Students of the Culinary Arts Program at Washtenaw Community College prepare dinner for us as part of their class.

If you have not yet participated in the Dining Program, sign up today!  
Meals are **\$16** each, billed monthly.

## Common Time

**Fridays, 4:30 - 6:30 pm**

Converse with your neighbors at an informal gathering held every Friday in the Brass Rail Café. Residents bring a bottle of wine, an appetizer, or give \$5 per person to the fund toward supplies.



## Needlework Group

**Every Thursday,  
1:00 - 4:00 pm**

This group is part of International Neighbors.  
All are welcome



## HAPPY BIRTHDAY TO YOU:

Marlene Gordon	3 <sup>rd</sup>
Charles Kelly	3 <sup>rd</sup>
Stefan Fajans	15 <sup>th</sup>
Lydia Bates	17 <sup>th</sup>
Ruth Fajans	19 <sup>th</sup>
Gayl Ness	19 <sup>th</sup>
Don Schulz	19 <sup>th</sup>
Lou Graff	27 <sup>th</sup>
Margaret DeMuth	28 <sup>th</sup>
Barbara Butler	30 <sup>th</sup>



## 5 O'Clock's

Monday, March 9

Hattula Moholy-Nagy

Laszlo Moholy-Nagy: A short  
biography of the artist presented by  
his daughter

Wednesday, March 11

Bette Michael

D.C. Where History Happened:  
January 20, 2009

*Bette's recent trip to Washington*



It's time again to  
change our clocks.

"Spring forward"

On Saturday night,  
March 7<sup>th</sup> (early Sunday  
morning, March 8<sup>th</sup>) turn

all your clocks ahead 1 hour.

Basically, at 2:00am Sunday, it will be

3:00am....so we'll lose an hour. ☹️

# March 2009

# Events Calendar

## RECITALS AND CONCERTS

Monday, March 16

4:30pm

Professors Timothy Steeves and  
Nancy Dahn

Duo Concert - Violin and  
Piano



Tuesday, March 24

8:00pm

Drew Bollinger

Voice and Piano

Friday, March 27

7:00pm

Matt Gozzard

Jazz Saxophone Combo

